



## MESSAGE FROM THE PRESIDENT

The Downers Grove Economic Development Corporation was formed in 2006 by the Village of Downers Grove and works in concert with the Village of Downers Grove, the Downers Grove Chamber of Commerce and the Downtown Downers Grove Management Corporation to attract and retain new businesses to our wonderful community. Our joint efforts are designed to increase the Village business tax base, increase the number of jobs within the Village and offer Downers Grove and area residents exciting new opportunities to work, shop and play, in Downers Grove.

We are constantly working to let the business community know of the wonderful opportunities for business in Downers Grove and we are off to a great start. Fortunately, we have a great foundation on which to build. Sound planning and previous efforts have created a healthy environment for businesses and residents alike.

The Village of Downers Grove offers a broad and varied business community. The Village is home to businesses large and small offering a full breath of goods and services to our residents as well those residents in the region. Publicly held, Fortune 500 companies like Sara Lee and FTD Floral call Downers Grove home. Downers Grove is the home to Good Samaritan Hospital, the area's recognized leader in cardiac care. Midwestern University provides for enhanced higher learning. Additionally, Downers Grove is home to many privately held boutique shops and dining establishments. From our commercial corridors to our office parks to our vibrant downtown to our industrial parks, Downers Grove has something to offer everyone. This diversity of businesses provides the Village and our surrounding communities a unique place to grow and prosper.

Downers Grove is ideally located just 22 miles west of Chicago, with easy access to O'Hare, Midway and DuPage County Airports. The Metra rail line provides express service into the city several times a day, moving people to and from Chicago's Union Station in just 32 minutes. Interstates 294, 88, 55 and 355 surround Downers Grove and provide additional transportation benefits to our Village.

In the Downers Grove Economic Development Corporation, diversity, networking and cooperation are pillars upon which we set our goals and objectives. Our board of directors includes representatives from our Village Government, our Chamber of Commerce, our schools and park district, our business community and our residents. Our business community directors come from the retail, commercial, financial, industrial, educational, health care and development fields.

If you have any questions, please feel free to contact the EDC offices at 630-729-0380 or visit our website at [www.dgedc.com](http://www.dgedc.com).

**Thank you,**

**Greg Bedalov**  
**President**  
**Downers Grove Economic Development Corporation**

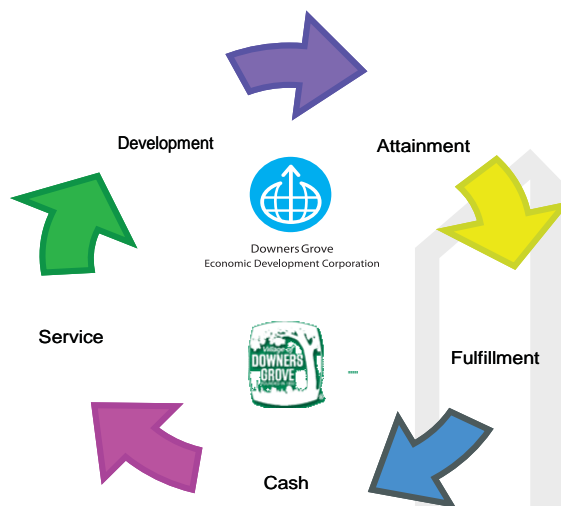
## It Is Time To Call Downers Grove Your Business Home!

- Downers Grove has a strong and diverse local economy
- Downers Grove has vibrant major commercial corridors
- Downers Grove is a regional employment center
- Downers Grove is a regional retail center
- Downers Grove is a location for high-quality hotels

### Downers Grove Economic Development Corporation Is Here To Serve You

Whether you are interested in expanding your business, looking to relocate your business to Downers Grove, the Downers Grove EDC is here to shepherd you through the process. We will provide you with assistance in understanding Village regulations and procedures as well as provide you with resource information such as local financial, technical or job training assistance and community profile information.

- Lead Development and Attainment
- Sales and Marketing Generation
- Facilitate Attraction and Retention
- Be a Voice of the Customer/Prospect
- Provide Information Management
- Provide Team Coordination
- Shepherd New and Existing Businesses
- Lobby
- Facilitate Property Acquisition



### Development Process

Downers Grove Economic Development Staff are available to shepherd you through the Development Process. A typical time frame is 8 -12 weeks. For more information about the Development Process and business opportunities within Downers Grove contact Greg Bedalov at 630-729-0380 or email at [gbedalov@dgedc.com](mailto:gbedalov@dgedc.com)

### Mission

To retain existing business and attract new business to Downers Grove. We will shepherd businesses through the development process and work to assure measurable return on investment for the business community while maintaining support of public land use policies and the overall betterment of the Citizens of Downers Grove.

### Vision

To establish distinct economic benefits specifically related to business entities making Downers Grove the preferred choice for businesses consistent with Village planning.

### Goals

Strengthen sales tax base  
Strengthen commercial and industrial tax base  
Increase hotel tax revenue  
Increase employment base

### Contact Information

**Downers Grove Economic Development Corporation**  
2001 Butterfield Road, Suite 120  
Downers Grove, IL 60515  
Office: 630-729-0380  
Fax: 630-729-0381  
[info@dgedc.com](mailto:info@dgedc.com)  
[www.dgedc.com](http://www.dgedc.com)

### Downers Grove Village Hall

801 Burlington Avenue  
Downers Grove, Illinois 60515  
Main Phone: 630.434.5500  
Fax: 630.434.5571

### Village Hall Hours

Monday, Wednesday, Thursday, Friday  
8:00 a.m. to 5:00 p.m.  
Tuesday  
8:00 a.m. to 7:00 p.m.  
[www.downers.us](http://www.downers.us)

# General Information

Economic Development Corporation

Downers Grove

## Locating a Site

Downers Grove is located in DuPage County, IL, which is home to nearly 1 million residents and over 700,000 jobs. DuPage County is the second most populous county in Illinois and strong employment center. The low tax rates, vast transportation network, and highly educated workforce make Downers Grove a great location for a business. Downers Grove has fourteen designated Business Corridors. Although each corridor has high pedestrian and automobile traffic, each corridor has an individual feel to it. Within these fourteen corridors there are two tax increment financing (TIF) areas, and two Industrial Parks. In addition to the fourteen designated corridors, Downers Grove has three Class A Office Parks.

Our knowledge of Downers Grove can help you assess your potential market and select the Corridor that best fits the needs of your business. The relationships that the DGEDC has formed with Realty Agents and Property owners, will aid in the process of selecting a location, fit for your business. The DGEDC website lists available commercial sites, all sizes large and small.

## Downers Grove Businesses By the Numbers

Number of Employees	51,074
Number of Businesses	2,411
Avg. Number of Employees per Business	21.2
Residents per Business	27.7
Total Aggregate Annual Payroll	2,343.0 million

## Major Employers In Downers Grove

Company	Service	Employees
Good Samaritan Hospital	Hospital / Trauma Center	2,500
GCA Services	School Maintenance	1,500
Unique Data Services	Custom Data Processing	1,050
Midwestern University	Education	1,000
Sara Lee Corporation	Food Service and Retail	1,000
Acxiom Corporation	Direct Marketing	700
First Health Group Corp	Health Benefits Provider	700
Wackenhut Corporation	Security Service	650
Donnelley & Sons Comp.	Tech. Engineering Facility	600
FTD. Incorporated	Flower and Gift Marketing	500
Tricon Industries, Inc.	Welding Products	500

## Manufacturing Sales Tax Generation 2007

Manufacturing	2%	Apparel	2%
General Merchandise	4%	Furniture & H.H. & Radio	15%
Food	7%	Lumber, Building & Hardware	7%
Eating & Drinking Places	11%	Automotive & Fill Stations	21%
Drugs and Misc. Retail	21%	Agriculture and All Others	11%

## Location

### Distance From Major Cities:

22 miles from Chicago  
88 miles from Rockford  
95 miles from Milwaukee  
183 miles from Springfield

### Distance From Area Airports:

O'Hare Intl. Airport: 22 miles  
Midway Airport: 18 miles  
DuPage County: 25 miles

## Public Transportation

- PACE Bus Service
- Grove Commuter Shuttle (Rush hour service to Main Street Train Station)
- Commuter Rail- Metra Burlington Northern Line (provides a 32 min. express train from Main Street Station, Downers Grove to the City of Chicago).

## Roads

Downers Grove is conveniently centrally located within DuPage County. Access to Downers Grove can be from:

- I-88 to the north,
- I-55 to the south,
- I-355 to the west
- I-294 to the east.



# Community Info

Economic Development Corporation

Downers  
Grove

## Healthcare

### Hospital

- Advocate Good Samaritan Hospital
- Level 1 Trauma Center
- Level 3 (the highest level in Illinois) Neonatal Intensive Care Unit
- Cardiac Care Unit
- Cancer Care Center offers Intensity Modulated Radiation Therapy (IMRT)
- Hospice Center
- 43 Acre Campus
- In 2007, a 91,956 Sq. Ft. addition that houses a \$25 million Intensive Care Unit, providing 44 patient beds was completed
- Opened a 50,000 sq. ft. ultra modern Surgical Pavilion, featuring technology and design innovation to enhance patient experience in Fall 2007

### Health Services

- 600 Doctors
- 100 Dentists
- Assisted living options
- Affordable social services offered through the DuPage County Department of Health and Human Resources and the Village's Social and Health Services Department

### Special Needs

- SEASPAR (South East Association for Special Parks and Recreation)
- Provides 450 diverse recreational activities to individuals with disabilities
- Serves 1,200 individuals of all ages
- Scholarships available

### Police Department

- Located at 825 Burlington Avenue; right next to Village Hall, in Downtown Downers Grove
- Awarded in 2006 the re-accredited status at the Commission on Accreditation for Law Enforcement Agencies (CALEA) Conference, this designation formally recognizes our department as being one of the most elite in our field. This accreditation is good for 3 years.

### Fire Department

- Downers Grove has 4 Fire Stations located throughout the community
- In 2007 Fire Station 2 was demolished and a new Fire Station 2 was completed in 2008

## Utilities

### Electricity

ComEd

### Natural Gas

Nicor

### Sanitary

Downers Grove Sanitary District

### Local Phone Service

SBC, AT&T

### Water Source:

Village of Downers Grove

### Cable:

Comcast

### Long Distance Carrier(S):

AT&T, Sprint, MCI, SBC

## Community Contact Information

### Advocate Good Samaritan Hospital

3815 Highland Avenue  
Downers Grove, IL 60515  
(630)275-5900  
[www.advocatehealth.com/gsam/](http://www.advocatehealth.com/gsam/)

### DuPage County Department of Health

111 North County Farm Road  
Wheaton, IL 60187  
(630)682-7400  
[www.dupagehealth.org](http://www.dupagehealth.org)

### SEASPAR

4500 Belmont Road  
Downers Grove, IL 60515  
(630)960-7600  
[www.seaspar.org](http://www.seaspar.org)

### Downers Grove Police Department

825 Burlington Avenue  
Downers Grove, IL 60515  
[www.downers.us](http://www.downers.us)

### Downers Grove Fire Department

(630)434-5980  
[www.downers.us](http://www.downers.us)

### Downers Grove Village Hall

801 Burlington Avenue  
Downers Grove, IL 60515  
(630) 434-5500

### Government Facts

Home Rule Authority  
Village Manager  
Elected: Mayor and 6 Village Commissioner  
[www.downers.us](http://www.downers.us)

## Education In Downers Grove

### District 58

11 Elementary Schools

2 Middle Schools

Received the Bright A+ Award of Excellence, which ranks the District among the top 5% of school districts in the state. One Elementary School was named a Blue Ribbon School, by the U.S. Department of Education, in 2007.

<b>Enrollment</b>	4,980
<b>Average Daily Attendance</b>	95.9%
<b>Certified Teachers</b>	367
<b>Average Teacher Experience</b>	15 years
<b>Certified Staff with Masters Degree</b>	68%

### District 99

2 Public high schools (District 99)

Received the Bright A+ Award of Excellence, which ranks the District among the top 5% of school districts in the state.

<b>Graduation Rate</b>	95.6%
<b>School Enrollment</b>	5,590
<b>Average class size</b>	25.6
<b>Average Daily Attendance</b>	93.3%
<b>Certified Teachers</b>	326
<b>Average Teacher Experience</b>	15 years
<b>Certified Staff with Master Degree</b>	79.9
<b>ACT Average composite score</b>	22.6

### Schools (Public/Private)

Preschools	1/6
Elementary	11/7
Middle Schools	3/0
High School	2/1

### University

Midwestern University

105-acre campus

Offers programs in Osteopathic Medicine, Pharmacy, Physical Therapy, Occupational Therapy, Biomedical Sciences and Clinical Psychology.

### Library

1 main library

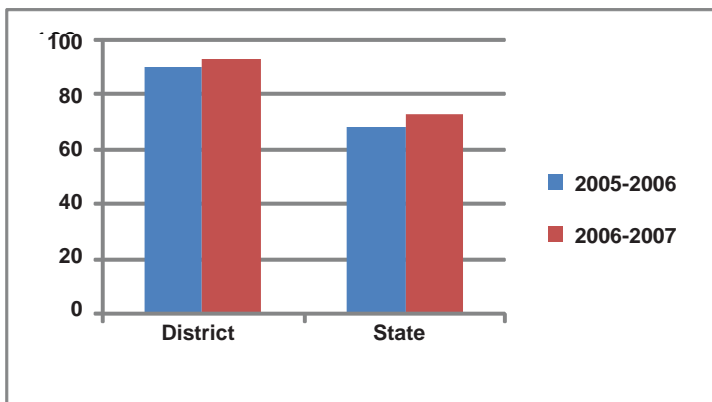
- Highest Circulation (931,900) among all 86 libraries in the Suburban Library System
- Special Needs Services
- Named one of the top ten libraries in the country
- Completed a \$8.2 million upgrade in 1999

### Park District

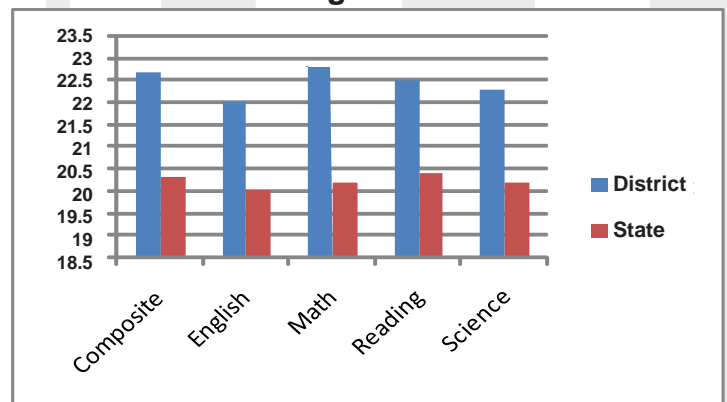
Parks and Recreation Facilities:

- 49 park sites on 600+ acres
- 24 parks with playground equipment
- Baseball and soccer fields
- Multipurpose synthetic turf athletic field
- 17 lighted tennis courts
- 18-hole miniature golf course
- Walking, jogging and nature trails
- Outdoor ice skating ponds
- Band shell, concession areas
- Three fishing ponds
- Frisbee golf course
- Swimming at high schools
- 69,000 Sq. Ft. Recreation and Fitness Center
- Historic nine-hole golf course established in 1892 by Charles Blair Macdonald
- Historic Museum
- 2 Nature Preserves
  - 50-acre Lyman Woods and Interpretive Center
  - 25-acre Belmont Prairie Nature Preserve

Overall All State Tests



ACT Assessment for the Graduating Class of 2007



## Business Resources (Retention, Relocation, Expansion)

### Illinois EDGE Program

The EDGE program is designed to offer a special tax incentive to encourage companies to locate or expand operations in Illinois when there is active consideration of a competing location in another State. The program can provide tax credits to qualifying companies, equal to the amount of state income taxes withheld from the salaries of employees in the newly created jobs. The non-refundable credits can be used against corporate income taxes to be paid over a period not to exceed 10 years. To qualify a company must provide documentation that attests to the fact of competition among a competing state, and agree to make an investment of at least \$5 million in capital improvements and create a minimum of 25 new full time jobs in Illinois. For a company with 100 or fewer employees, the company must agree to make a capital investment of \$1 million and create at least 5 new full time jobs in Illinois.

### Employer Training Investment Program

The Employer Training Investment Program (ETIP) helps keep Illinois workers' skills in pace with new technologies and business practices, which, in turn, helps businesses increase productivity, reduce costs, improve quality and boost competitiveness. ETIP grants can reimburse new or expanding companies for up to 50 percent of the cost of training their employees. Trainees must be employed by the company prior to implementation of the training program. Instructors may be plant workers, public educators, private consultants, or others possessing the required expertise. Grants may be awarded to individual businesses, original equipment manufacturers sponsoring multi-company training for employees of their Illinois supplier companies, and to intermediary organizations operating multi-company training projects.

### Participation Loan Program

The PLP program is designed to work through banks and other conventional lending institutions, to provide subordinated financial assistance to Illinois small businesses that employ Illinois workers. A business with 500 or fewer employees may apply for a PLP loan of not less than \$10,000 no more than \$750,000. Loans shall not exceed 25% of the total project and may not be used for debt refinancing or contingency funding.

### Large Business Development Program

The Illinois DCEO Large Business Development Program (LBDP) provides incentive financing to encourage large out-of-state companies to locate in Illinois. It also provides incentives for existing large companies to undertake substantial job expansion or retention projects.

### Corporate Headquarters Relocation Act

The Illinois DCEO Headquarters Relocation Act offers targeted incentives to large companies that relocate their corporate headquarters to Illinois.

### DuPage County Small Business Loan Program

The purpose of the loan fund is to provide funding to entrepreneurs who wish to develop or expand a business within DuPage County and who are willing to create employment opportunities for low-income individuals. Funding for the program is provided through Community Service Block Grant (CSBG) dollars.

## Business Resources

### Downers Grove Economic Development Corp.

2001 Butterfield Road, Ste. 120  
Downers Grove, IL 60515  
Greg Bedalov, President  
630.729.0380

### Village of Downers Grove

Downers Grove Village Hall  
801 Burlington Avenue  
Downers Grove, Illinois 60515  
Telephone: 630.434.5500  
Dave Fieldman, Village Manager  
Fax: 630.434.5571

### Downers Grove Chamber of Commerce

2001 Butterfield Road, Suite 105  
Downers Grove, IL  
Laura Crawford, President and CEO  
630.968.4050

### Downers Grove Downtown Management

933A Curtiss Street  
Downers Grove, IL  
Linda Kunze, Manager  
630.725.0991

### Choose DuPage

2525 Cabot Drive, Suite 303  
Lisle, IL 60532  
Roger Hopkins, President and CEO  
630.955.2090

### Department of Commerce and Economic Opportunity

620 E. Adams  
Springfield, IL 62701  
Jack Lavin, Director  
217.782.7500  
-or-  
100 W. Randolph  
Suite 3-400  
Chicago, IL 60601  
312.814.7179

### College of DuPage

Business and Professional Institute  
2525 Cabot Drive, Suite 201  
Lisle, IL 60532  
Meryl Sussman, Director  
630.942.2600

### **Small Business Innovation Research Program (SBIR)**

Sponsored by the United States Department of Defense, the SBIR program provides research and development funding to a broad range of small businesses, from start-up firms to established small high-tech companies with commercial track records.

### **Chicago Area Venture Capital Firms**

Venture capital firms in the Chicago area account for over \$50 billion in capital and provide funding for all types of firms including early-stage technology, food and beverage industries, health care, and manufacturing to name a few.

### **Industrial Revenue Bonds**

The Illinois Finance Authority issues tax-exempt Industrial Revenue Bonds (IRBs) on behalf of manufacturing companies to finance the acquisition of fixed assets including land, buildings, and equipment. Bond Proceeds also may be used for either new construction or renovation.

### **Tax Increment Financing**

Tax Increment Financing, or TIF, is a tool local governments use to attract investment to specific areas. TIF allows local governments to make improvements to infrastructure and provide incentives to attract businesses.

### **Industrial Workforce Training Program**

The Illinois DCEO Industrial Training Program assists companies in training new workers and retraining or upgrading the skills of their existing workforce.

### **Workforce Training Grants**

The purpose is to assist DuPage County businesses who have the need to train and re-train existing members of their workforce, and to enable the companies, as well as the employees, to remain competitive in the local regional economy.

#### **Incumbent Worker Training (IWT) Program**

The Incumbent Worker Training (IWT) program allows employers to apply for funding assistance to cover the cost of occupational training for incumbent employees. Applications can be made for up to \$20,000 to cover the costs of training. Upon approval of an IWT application, reimbursement is provided to your organization following the successful completion of training.

#### **New Hires Training**

Workforce Investment Act (WIA) funds can be applied toward occupational training that is essential to the successful job performance of newly hired, WIA eligible individuals. In order to qualify for this service, new hires must meet eligibility criteria for available WIA funds and must be in need of specific occupational training in order to commence or retain newfound employment. An extensive variety of training can be approved through the WIA program, including various computer certifications, ESL courses, commercial driver's license programs, and more.

### **Employer Assisted Housing Program**

Employers across the region are discovering the benefits of employer-assisted housing programs, which continue to prove themselves win-win-win initiatives: employers benefit by building employee loyalty and reducing turnover. Employees gain access to homeownership education and down payment assistance to purchase a home.

**For more information about these programs contact Choose DuPage at 630-955-2090 or Downers Grove Economic Development Corporation 630-729-0380.**

## **Business Resources**

### **U.S. Small Business Administration**

Chicago District Office  
500 W. Madison Suite 1250  
Chicago, Illinois 60661-2511  
Judith Roussel, Director  
312.353.4528

### **Women's Business Development Center**

8 S. Michigan Avenue Suite 400  
Chicago, Illinois 60603  
Teresa Prim, Finance Specialist  
312.853.3477

## **Other workNet Center Program**

### **Friday Job Fairs**

These bi-monthly events are held at the WORKNET DUPAGE CAREER CENTER. Recruiters must register to attend a Job Fair in advance. There are several benefits inherent in the format of our Job Fairs.

✓ **Diverse pool of job seekers** -- At these events you will encounter everyone from customer service individuals to warehouse workers to high-end technical and executive level people.

✓ **Mixture of industries/companies** -- We arrange for a blend of industries and companies to be represented at each event in order to limit the amount of competition your recruiters encounter from the other recruiters in attendance.

✓ **Smaller, more intimate setting** -- We limit these events to ten companies because we feel that both the job seekers and recruiters benefit from the more personalized environment.

✓ **Advertising** -- These events are advertised externally among various job seeker groups, schools, associations, etc. Once your company registers for a Friday Job Fair, we find out what types of jobs you will be recruiting for, and we advertise at locations we believe will yield appropriate candidates. We also advertise online at the ILLINOIS WORKNET web portal.

**Contact Crystal Relford, Employer Outreach & Marketing Specialist: 630/955-2067, [crelford@worknetdupage.org](mailto:crelford@worknetdupage.org)**

### **Job Posting Assistance**

If your organization sends workNet DuPage job opening information, they will take several measures to make sure that information is disseminated to a wide range of candidates.

✓ **Online posting** at the ILLINOIS WORKNET web portal

✓ **Job boards at the WORKNET DUPAGE CAREER CENTER** and our satellite resource room in Lombard

✓ **Job binders** which our job seeker clients review

✓ **Workforce Development Division Counselors** receive the job lead information and use it to assess and refer appropriate candidates to you

✓ Network of agencies, job clubs, schools, etc. are forwarded your job lead. They select and inform those that consist of populations relevant to your open position.

**Contact Kathy Duda, Employer Liaison: 630/955-2068, [kduda@worknetdupage.org](mailto:kduda@worknetdupage.org)**

# Demographics

Economic Development Corporation

Downers Grove

**Point of Focus:** Downtown Downers Grove  
1015 Curtiss St  
Downers Grove, IL 60515

Latitude: 41.793599  
Longitude: 88.010518

Summary	2000	2006	2011
Population	68,061	66,727	66,865
Households	26,262	26,336	26,371
Families		18,174	18,214
Average Household Size	2.56	2.6	2.5
Owner Occupied HUs	20,245	20,378	20,514
Renter Occupied HUs	5,989	6,082	6,176
Median Age	43	46	48

## Trends: 2006-2011

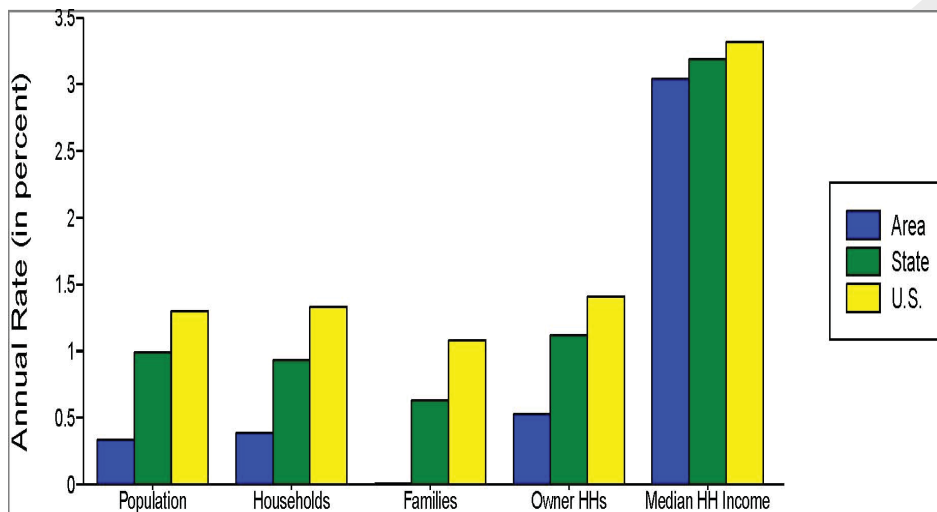
Annual Rate	Area	State	National
Population	0.33%	0.99%	1.30%
Households	0.39%	0.93%	1.33%
Families	0.01%	0.63%	1.08%
Owner HHs	0.53%	1.12%	1.41%
Median Household Income	3.04%	3.19%	3.32%

Households by Income	2000		2006		2011	
	Number	Percent	Number	Percent	Number	Percent
< \$15,000	2,658	6.8%	2,020	5.2%	1,687	4.2%
\$15,000 - \$24,999	2,767	7.1%	2,052	5.3%	1,796	4.5%
\$25,000 - \$34,999	3,636	9.3%	2,943	7.5%	2,096	5.3%
\$35,000 - \$49,999	5,253	13.5%	4,187	10.7%	3,986	10.0%
\$50,000 - \$74,999	8,497	21.8%	7,364	18.8%	6,538	16.4%
\$75,000 - \$99,999	6,357	16.3%	6,443	16.5%	5,611	14.1%
\$100,000 - \$149,999	6,112	15.7%	7,982	20.4%	9,494	23.8%
\$150,000 - \$199,000	1,867	4.8%	3,011	7.7%	3,837	9.6%
\$200,000+	1,888	4.8%	3,067	7.9%	4,783	12.0%

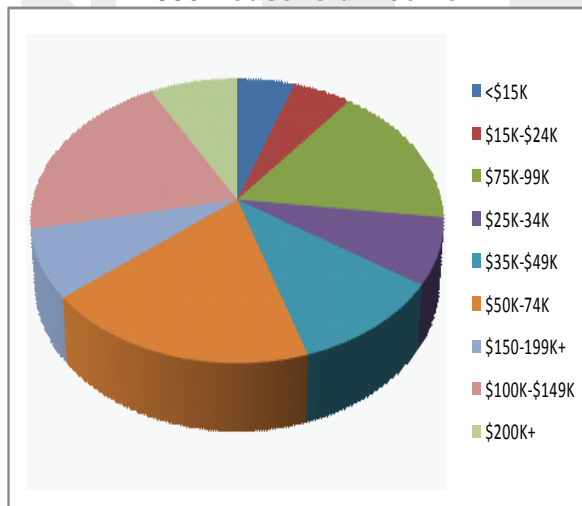
  

Median Household Income	\$64,209	\$ 77,819	\$ 90,393
Average Household Income	\$81,552	\$102,017	\$122,371
Per Capita Income	\$31,791	\$ 39,668	\$ 47,681

## Trends 2006-2011



## 2006 Household Income



# Demographics

Economic Development Corporation

Downers  
Grove

**Point of Focus:** Downtown Downers Grove  
1015 Curtiss Street  
Downers Grove, IL 60515  
Radius: 3 miles from Downtown Downers Grove

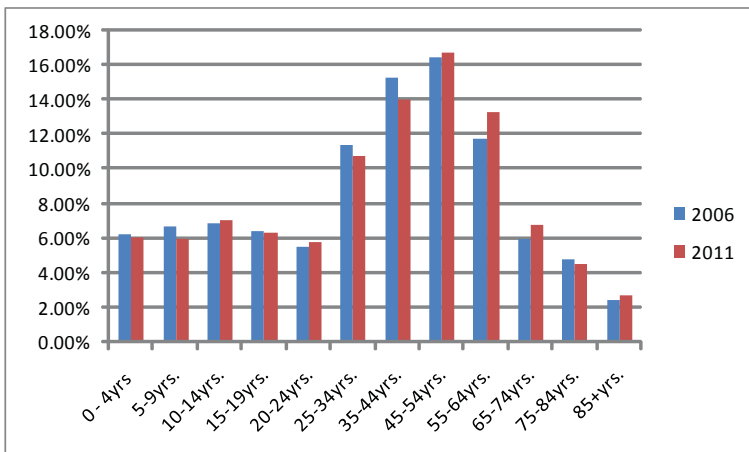
Latitude: 41.793599  
Longitude: 88.010518

Population by Age	2000		2006		2011	
	Number	Percent	Number	Percent	Number	Percent
0 - 4	6,712	6.6%	6,264	6.2%	6,301	6.1%
5 - 9	6,954	6.9%	6,773	6.7%	6,114	6.0%
10 - 14	7,165	7.1%	7,000	6.9%	7,272	7.1%
15 - 19	6,314	6.2%	6,484	6.4%	6,434	6.3%
20 - 24	5,231	5.2%	5,560	5.5%	5,933	5.8%
25 - 34	13,839	13.7%	11,489	11.4%	11,128	10.8%
35 - 44	17,710	17.5%	15,458	15.3%	14,332	14.0%
45 - 54	15,644	15.4%	16,675	16.5%	17,159	16.7%
55 - 64	9,240	9.1%	11,870	11.8%	13,608	13.3%
65 - 74	5,926	5.9%	6,071	6.0%	6,971	6.8%
75 - 84	4,746	4.7%	4,895	4.8%	4,611	4.5%
85+	1,805	1.8%	2,401	2.4%	2,770	2.7%

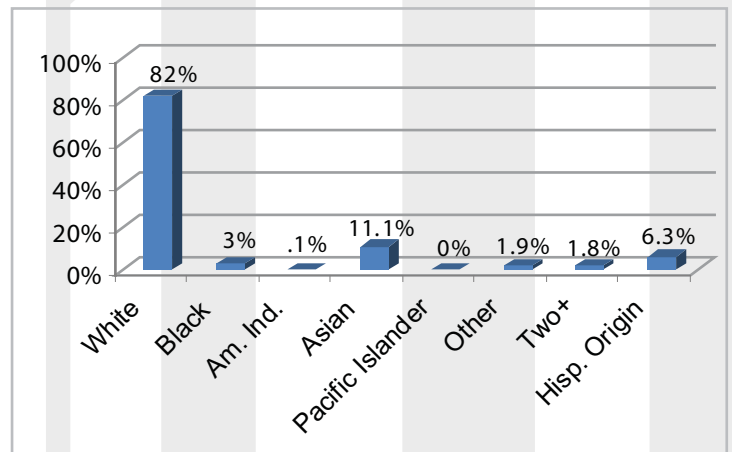
## Race and Ethnicity

Race and Ethnicity	2000		2006		2011	
	Number	Percent	Number	Percent	Number	Percent
White Alone	86,384	85.3%	82,772	82.0%	81,120	79.0%
Black Alone	2,970	2.9%	3,054	3.0%	3,182	3.1%
American Indian Alone	122	0.1%	129	0.1%	140	0.1%
Asian Alone	8,776	8.7%	11,228	11.1%	13,693	13.3%
Pacific Islander Alone	15	0.0%	15	0.0%	15	0.0%
Other Race Alone	1,507	1.5%	1,954	1.9%	2,427	2.4%
Two or More Races	1,512	1.5%	1,786	1.8%	2,056	2.0%
Hispanic Origin	4,868	4.8%	6,375	6.3%	7,955	7.8%

## Population By Age



## Population By Race



# Conduit Financing

Economic Development Corporation

Downers  
Grove

## The Downers Grove Economic Development Corporation Is Here To Serve You

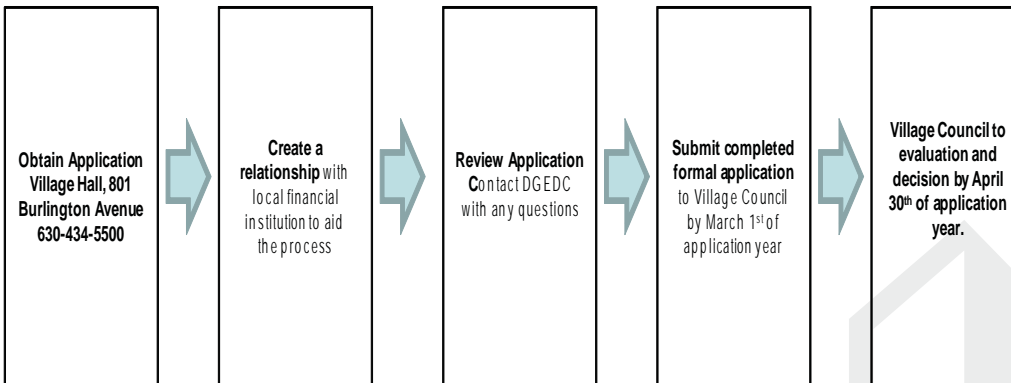
Whether you are interested in expanding your business or looking to relocate your business to Downers Grove, the Downers Grove EDC is here to assist you with the Conduit Financing process. We have taken the ordinance and highlighted a few key points for your convenience

### Need Financial Assistance?

The Village of Downers Grove, a home rule community, has the authority to issue tax-exempt bonds to promote new facilities and expansion and refurbishing of existing facilities that qualify under the Tax Reform Act of 1986 and 30 ILCS 345.

### Quick Facts:

- The Village of Downers Grove has an allowance available, typically \$4.7 million (+/-) a year (based on annual population).
- Awarded to one or more businesses, based on the discretion of the Village Council
- Provides a lower cost of borrowing to the borrower.
- The EDC is available to assist with all steps of the Conduit Financing Process



## Conduit Financing Process

Downers Grove Economic Development Staff are available to shepherd you through the Conduit Financing Process. For more information about the business opportunities within Downers Grove and/or Conduit Financing please contact the EDC at 630-729-0380 or email at [info@dgedc.com](mailto:info@dgedc.com)

## Who Qualifies?

Conduit financing is available to a non-profit 501(c)(3), and/or a private organization that needs financial assistance in improving their business for the betterment of the community.

## What is Conduit Financing?

Under federal and state statutes the Village Council has the authority to issue tax-exempt bonds for non-profit organizations organized under Internal Revenue Code 501(c)(3), and economic development revenue bonds, also known as private activity bonds, under the Tax Reform Act of 1986.

## Where do I apply?

Applications can be acquired at Village Hall, 801 Burlington Avenue, Downers Grove, or on the Village of Downers Grove Website, [www.downers.us](http://www.downers.us).

## When do I apply?

Completed applications are due on March 1st, of the year that the applicant is looking to receive the Conduit Financing. After April 30th if there is still available bonds, applications will be accepted on a rolling basis.

## How do I apply?

Obtain an application, read it thoroughly, contact the EDC with any questions that may arise, fill out the application in full and submit to Village Hall by March 1st.

## Contact Information

**Downers Grove  
Economic Development Corporation**  
2001 Butterfield Road, Suite 120  
Downers Grove, IL 60515  
Office: 630-729-0380  
Fax: 630-729-0381  
[info@dgedc.com](mailto:info@dgedc.com)  
[www.dgedc.com](http://www.dgedc.com)

**Question: What is the Downers Grove Economic Development Corporation?**

**Answer:** Created in 2006, the DGEDC is a public-private 501(c)(6) economic development partnership that leverages resources to attract businesses to Downers Grove and retain the businesses in Downers Grove. The DGEDC is supported by the Village of Downers Grove and over 20 private-sector businesses. The focus of the DGEDC is to leverage available resources to develop a high performance economy by attracting high-quality investments and jobs. We are the gateway to the village, we are here to help you navigate through the process from point of interest to completion.

**Question: Is the DGEDC a government agency?**

**Answer:** No. The DGEDC is an independent 501(c)(6), not-for-profit corporation.

**Question: How do the board members get elected?**

**Answer:** The original DGEDC board was appointed by the Mayor of Downers Grove and the Downers Grove Village Council and was comprised of previous members of the Downers Grove Economic Development Commission. From these members a nominating committee was then formed. The nominating committee is responsible for bringing forth perspective board members. The full board then elects new board members, brought forth by the nominating committee at its Quarterly Board Meeting. Other board members include representatives from governmental and educational institutes, who serve in an ex-officio capacity.

**Question: How is the DGEDC funded?**

**Answer:** The DGEDC is a public-private partnership with its initial funding coming from the Village of Downers Grove hotel/motel sales tax. Additional funding is provided by the private sector.

**Question: Who are the members?**

**Answer:** A complete listing of public and private sector members is available at the DGEDC website, [www.dgedc.com](http://www.dgedc.com)

**Question: What types of businesses does the DGEDC bring to Downers Grove?**

**Answer:** The DGEDC is committed to attracting businesses to Downers Grove that are consistent with the Village's Strategic Plan and the additional corridor specific plans for its major business areas.

**Question: How does the DGEDC attract business to Downers Grove?**

**Answer:** The DGEDC markets Downers Grove through select print advertisements, direct-mail campaigns and editorial marketing. The DGEDC staff also conducts face-to-face selling to corporate executives and site-selection consultants through sales trips and trade conferences. Once a prospect is generated, the DGEDC works in partnership with our various local and state agencies to encourage the company to select Downers Grove.

**Question: What impact do board members have on the DGEDC economic development strategy?**

**Answer:** Stakeholders are encouraged to participate in the DGEDC's various meetings and committees, champion key initiatives to improve the business climate in Downers Grove and refer potential investors and corporate leads to the DGEDC.

**Question: What is my return on investment?**

**Answer:** The creation or attraction of high-quality jobs to the region improves the entire region's economic performance. This economic activity has a positive impact on virtually every industry, which will benefit our stakeholders and our community. In addition to these macro benefits, stakeholders have access to DGEDC databases and market research, including industry trends and data, receive DGEDC communications, high-profile networking opportunities at DGEDC meetings and events, as well as opportunities to explore leadership roles within the organization.

**Question: How is the DGEDC different from other organizations?**

**Answer:** The DGEDC is a partnership between public and private sectors, created to attract new businesses into the region, as well as focusing on retention and expansion of businesses already located in Downers Grove. The DGEDC is also charged with business and leisure travel and the continued viability of Downers Grove hotels. The mission of business attraction charges the DGEDC with marketing Downers Grove on the state and national level. The DGEDC also works with property development firms to ensure the needs of commercial tenants are being met so that additional tenants may be cultivated and recruited to Downers Grove.